

# Hull Industries

*An Affiliate of Chant Engineering*

2017 Product Catalog

## PLASTICS PROCESSING EQUIPMENT



## Innovative Solutions for these Industries

- Aerospace • Automotive • Appliance • Composites • Electrical
- Electronics • Laboratory • Military • Medical • Power Tools

**215.230.4260**

[hullindustries.com](http://hullindustries.com)

## Superior Design-Build Machines for Durability and Reliable Performance

Since the 1950's, Hull Industries has established a worldwide reputation as a leading innovator in Plastics and Composites Processing Equipment. Today the company continues to carry on Hull's long tradition of working closely with the customer to understand their unique application in order to provide special engineering, high quality equipment and responsive service and support.

Hull Industries designs and builds a wide range of standard and custom equipment for both thermoplastic and thermoset applications.

### Compression Presses

Hull Industries builds compression presses from 5 to 4,000 tons to process materials such as SMC, BMC, phenolic, Bismalimide, rubber, silicone, polyurethane, carbon filled epoxy, high density polyethylene, LFT, friction materials and carbon filled thermoplastic composites such as PEEK. The presses are designed and built to provide many years of high quality molding.

- Hull presses incorporate process control of position, velocity and pressure of the clamp for optimum molding results.
- The presses can be configured with features such as heat platens & heat and cooling platens.
- Data collection, Ethernet and real time graphing.
- VPN so that our technicians can log in and troubleshoot your press from a remote location.
- Other styles of presses such as multi-opening presses, RTM presses, vacuum presses and multi-axis presses are available. See the list of our available options.

We offer a wide range of equipment for plastics processors, backed by special engineering and turnkey design, installation and training. Below are a few examples of Hull presses:



300 Ton Acting Press



500 Ton Press



650 Ton Press



Compression Press

### Transfer Presses

Hull Industries Transfer Presses are used to encapsulate or over-mold a variety of products including electrical, electronic and medical. Materials used include epoxy, phenolic and gum stock silicone.

Hull's Transfer Presses can be equipped with the optional Smart Mold Software for high precision applications.

### Custom Engineered to Meet Your Requirements

Whether you're geared for high volume, repetitive production or short runs of complex parts in flexible manufacturing systems, Hull Industries' skilled engineers can design systems to meet your production demands and quality standards.



Transfer Presses

Contact your Hull representative for your custom quote.

[www.hullindustries.com](http://www.hullindustries.com)

## Automation

With over 20 engineers on staff, Hull can design-build a complete production system. Automation can include material loading, part unloading, moving caul plates in and out of the press and post molding operations among others. The complete cell can be integrated into one control system. The entire production system can be successfully run on our shop floor before shipment to the customer's location.

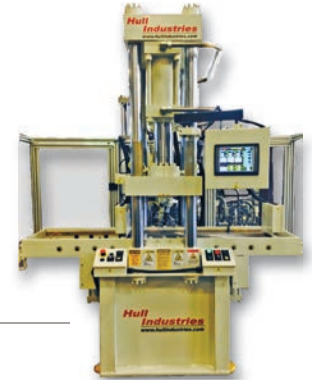


Automatic Compression Press

## Shuttle Presses

Hull's shuttle presses are high production rate presses for parts requiring the operator to load intricate inserts into the mold. The mold consists of two lower halves with a common top half.

- Increase production and decrease costs by having one operator for two convenient loading stations.
- Load and unload one bottom mold half while components in the second half are undergoing cure.
- Easily load individual components into the mold at the unobstructed work stations.
- Use the same machine for both encapsulation and general insert molding work.
- Obtain greater operator safety because inserts can be loaded in the clear, not between two halves of a mold.



Shuttle Press

## Deflashers

When molding Thermoset parts the viscosity of the resin flows very well. It is inevitable that some of the resin will get in the parting line of the mold and become unwanted flash when it cures. The part goes in with flash and comes out of the machine deflashed, cleaned and dried. Hull Industries has developed different styles of deflashing machines to accommodate various thermoset parts.

### Low Pro Inline Deflasher



Low Pro Inline Deflasher

Low Pro Deflashers function with high efficiency in integrated manufacturing cells, where similar parts or families of parts are molded and finished to meet time constraints and quality demands.

- Compactly designed units operate near molding presses or are linked by a conveyor.
- Easily configure for automatic or semi-automatic operation.
- Available in adjustable mesh belt, double belt or custom configurations.
- Offered in a variety of standard or optional dust handling and cleaning equipment.

### Rollveyor Deflasher

The portable Rollveyor Deflashing System provides automated, high-efficiency deflashing at the molding press for small or large parts in batch or continuous operations.

- Small parts may be deflashed individually or in twin blast chambers.
- Dividers may be added to create up to eight compartments with separate tumbling paths.
- Belt speed and tilt angle can be adjusted for almost any tumbling motion.



Rollveyor Deflasher

### Workloading Frame Deflasher

Ideally suited for electronics packaging, the Workloading Frame Deflasher offers the following advantages:

- Keeps leadframes securely fastened.
- Easily insert the frame holder into deflasher front door.
- Simply push button and deflasher will sweep across parts and follow with a blast of clean air to remove any dust particles.
- Your parts will come out free of any flash and clean for post processing.
- Keeps your parts and material handling to a minimum, allowing for a streamlined molding process.



Workloading Frame Deflasher

## Vacuum Impregnation Systems

In a large variety of installations throughout the world, Hull's Vacuum Impregnating Systems provide high productivity and reliable efficiency. Based on the same proven design standards Hull Industries can develop a custom system that specifically meets the requirements of your application.

- Vacuum tested chambers and tanks available as round or rectangular.
- Optional features include quick-opening lid and counter-weighted or hydraulically raised lid.
- Can be used to seal or enhance the properties of a variety of products and components.
- Can be built to ASME code for full vacuum and up to 200 psi pressure.
- Welded flange used to improve sealing quality for use with stronger vacuum.

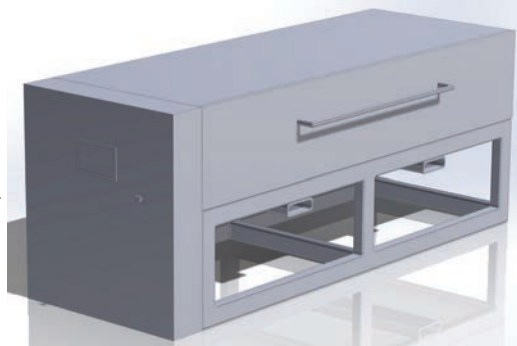


Vacuum Impregnation System

## Mold Preheater

In larger presses that are molding thermoset parts, changing the mold can take 4 hours or longer. At least 75% of that time is waiting for the mold to come up to the proper temperature. The Hull Mold Preheater can eliminate that wait time. By preheating the mold very close to or even above its operating temperature it saves the molder several hours and several hundred dollars on every mold change by freeing up the press to make parts instead of waiting for the mold to come up to temperature.

- Easy Mold Load and Unload.
- Oil, Electric or Steam heat for the platens.



Mold Preheater

## Customization

Whatever your requirements are, Hull Industries is ready and equipped to meet them. Automation features such as material loading, insert loading, part unloading and caul sheet handling can be incorporated. Other features such as active parallelism, intelligent leveling, servo-electric driven hydraulics, data collection, high temperature heating and cooling and vacuum can be part of your system.

Our sales and engineering team will meet with you to discuss your application in detail so that we have a complete understanding of your objectives. We will design and build the most efficient press or press system to produce high quality parts for your organization.

## Service

Whether it's service for presses and deflashers or training for the operators or maintenance personnel it's all available at Hull Industries. Our technicians are highly trained and possess tremendous skill to get your equipment fixed right the first time. We are proud of our technical staff and their dedication to our customers.

Hull Industries has experienced technicians that have been trained in all phases of plastic molding, hydraulics, and controls. Hull Industries technicians travel the world to provide installation/start-up assistance and training as well as on site troubleshooting/service. We also have a complete staff of engineers available as necessary.



Please call 215.230.4260 or email: [info@hullindustries.com](mailto:info@hullindustries.com) to request our onsite service rates.

## Our Facility and Team

Hull Industries 60,000 square foot Headquarters building is located in New Britain, PA and houses a 50,000 square foot manufacturing facility. We have extensive experience designing and manufacturing standard and custom engineered equipment and systems for the plastics industry. One of our strengths that separates us from the competition, is our extensive in-house engineering capabilities.

We have over 20 full-time engineers covering every discipline (hydraulics, controls, software, mechanical, electrical, etc.), which allows us to efficiently design, manufacture and make quick and cost effective design changes to help meet your specific system requirements.



[www.hullindustries.com](http://www.hullindustries.com)

## Available Options for Hull Presses

---

Hull Industries presses are designed and built to match our customers needs. Below is a list of options that can be included in any machine. Please inquire if you don't see an option that you need listed below.

- Heat Platens up to 1000° F
- Heat/Cool Platens
- Lighted Mold Area
- Multi-zone Temperature Control
- Heater Burnout Detection
- Mechanical Ejection
- Hydraulic Ejection
- Hydraulic Side Core
- Active Parallelism Control
- Multiple Daylights
- Front Shuttle
- Flash Chute
- T-slots in Platen
- Levelers
- Viewing Window for PLC
- Vacuum Control and Software
- Stack Light for Alarm and Cycle Completion
- Heated Reservoir
- Clean Room Exterior
- Data collection
- Ethernet
- PC based HMI
- Automation
- Swing Arm HMI
- Sound Enclosure
- Light Curtains
- Larger Color Touch Screen
- Water Saver Valve
- Removable Drip Pan
- Mold Heat Transformer
- Hydraulic Mold Clamps
- Heater Box Receptacles
- Heater Burn-out Detection
- Ejectors with T-bars and Flow Dividers
- Gate Cutter Hydraulics
- Bar Code Scanner
- Vacuum Enclosure
- Mold Pre-Heaters, and more...

Because of its long-standing commitment to the plastics industry, Hull Industries has the expertise to engineer special equipment from standardized design platforms, assuring cost-effective problem solving for even the most complex applications.

## Quality Assurance and Customer Support

---

Hull's equipment is designed, manufactured, assembled and tested in-house at our New Britain, Pennsylvania (Philadelphia area) plant. Equipment is shipped to customers only after thorough factory testing.

- In-house testing
- Onsite installation and start-up assistance
- Preventative maintenance
- Customer training (available worldwide)
- Service and repairs
- Upgrade and refurbish existing machines

By selecting Hull Industries, you'll receive superior design and construction services proven to ensure your machine's durability and reliable performance.

**Contact Hull for your custom quote today at 215.230.4260**

**Where Creative Engineering is Standard Practice**



59 Industrial Drive  
New Britain, PA 18901, USA  
hullindustries.com  
info@hullindustries.com  
o: 215.230.4260  
f: 215.230.4261